

FRETTE  
1860

HOSPITALITY  
COLLECTION

# COMFORT

Since 1860, Frette has collaborated with the most skilled artisans to craft a range of exceptional linens, unparalleled in their levels of comfort and craftsmanship.

With both trend-setting and classic styles and impeccable quality, Frette's Hospitality Collection redefines the guest experience, presenting the details to elevate top hotels, cruise ships, airlines, restaurants, spas and more.

The Hospitality Collection offers a vast array of bed, bath and table linens as well as bathrobes, slippers and pool towels made from the finest available fibers.

Frette works hand-in-hand with clients in creating custom pieces that add to a memorable experience for guests, tailoring collections through customized designs as well as matching fabrics, colours, styles and monograms.

AND  
CRAFTSMANSHIP



THE  
DESTINATIONS  
COLLECTION

# DUBAI



**Smeraldo Sateen, Plain Design, 100% Cotton, Mercerized. Ivory colour. Three lines of piping.**  
**Ravenna Decorative Cushion, 100% Cotton Pique, Mercerized. Ivory colour.**





**Nico Towel Set**, 100% Cotton, Single Twisted Terry, Pique Border. White colour.  
**Velour Bathrobe**, 100% Cotton, White colour.  
**Huckaback Towel**, 100% Cotton, Single Twisted.



# ASPEN

**Smeraldo Sateen**, Plain Design, 100% Cotton, Mercerized.  
White and Birch colours. Chain Embroidery.  
**Partout Decorative Cushion**, 100% Polyester, Brut/Cord colour.  
**Lucia Throw**, Wool and cashmere throw with fringes  
on short sides. Birch colour.  
**Velvet Decorative Cushion**, 100% Polyester, Birch colour.



# NEW YORK



**Smeraldo Sateen, Plain Design, 100% Cotton, Mercerized. White colour. Two lines of piping.**  
**Velvet Decorative Cushion, 100% Polyester, Black colour.**  
**Tetris Decorative Cushion, Cotton/Polyester, Black/White colour.**  
**Lucia Throw, Wool and cashmere throw with fringes on short sides. Black colour.**



**Tetris Decorative Cushion**, Cotton/Polyester, Black/White colour.  
**Partout Decorative Cushion**, 100% Polyester, White/Slate Grey colour.

**Tour Towel Set**, 100% Cotton, Double Twisted Terry, Twill Border.  
Black colour.

**Nico Towel Set**, 100% Cotton, Single Twisted Terry, Pique Border.  
White colour. Two lines of piping.

**Velour Bathrobe with Black Piping**, 100% Cotton, White.







# SANTORINI



**Smeraldo Sateen, Plain Design, 100% Cotton, Mercerized.**  
White colour. Trim on edges. Grey, Blue, Black and Red colours.  
**Partout Decorative Cushion, 100% Polyester, Black/Ink Blue colour.**





# POLYNESIA



**Smeraldo Sateen**, Plain Design, 100% Cotton, Mercerized. White colour. Wave Embroidery.  
**Partout Decorative Cushion**, 100% Polyester, White/Aqua colour.  
**Lucia Throw**, Wool and cashmere throw with fringes on short sides. Aqua colour.



**Smeraldo Sateen**, Plain Design, 100% Cotton, Mercerized. White colour with Aqua applied border. Wave Embroidery.

**Lucia Throw**, Wool and cashmere throw with fringes on short sides. Aqua colour.

**Partout Decorative Cushion**, 100% Polyester, White/Aqua colour.

**Tour Towel Set**, 100% Cotton, Double Twisted Terry, Twill Border. Ivory, Aqua and Ink Blue colours.



# MILANO



**Smeraldo Sateen**, Plain Design, 100% Cotton, Mercerized. Trim on edges. Slate Grey and White colours.  
**Quilted Velvet Decorative Cushion**, 100% Polyester, Slate Grey colour.





SHANGHAI

**Smeraldo Sateen**, Plain Design, 100% Cotton, Mercerized. White colour with Grey Cliff applied borders.  
**Ravenna Decorative Cushion and Bed Cover**, 100% Cotton Pique, Mercerized. White colour.  
**Quilted Velvet Decorative Cushion**, 100% Polyester, Grey Cliff colour.  
**Velour Bathrobe with White Piping**, 100% Cotton. White colour.



# HONG KONG



Smeraldo Sateen, Plain Design, 100% Cotton, Mercerized.  
White colour. Rhomb Embroidery.





**Decorative Cushion**, from the top: **Velvet**, 100% Polyester, Slate Grey colour. **Rock**, Polyester/Cotton, White/Grey Cliff colour. **Partout**, 100% Polyester, Brut/Birch colour. **Tetris**, Cotton/Polyester, Brut/Cord colour. **Rock**, Polyester/Cotton, Black/Ink colour. **Partout**, 100% Polyester, White/Aqua colour. **Tetris**, Cotton/Polyester, Black/Ink colour.

**Lucia Throw**, Wool and cashmere throw with fringes on short sides. Colours from the top: Ink Blue, Cord, Grey Cliff, Black, Birch, Slate Grey, Aqua.



THE  
EVERYDAY  
COLLECTION





**Terry Kimono Bathrobe**, 100% Cotton. White.  
**Nico Towel Set and Bath Mat**, 100% Cotton,  
Single Twisted Terry, Pique Border, White.  
**Velour Slippers**, 100% Polyester, Micro Suede Sole  
with Non-Slip Dots, Closed Toe, White.

**Sophia Sateen**, Large Vertical Stripe Design.  
100% Cotton, Mercerized, White colour.  
**Rigato Ara Sateen**, Small Vertical Stripe Design.  
100% Cotton, Mercerized. White colour.  
**Smeraldo Sateen**, Plain Design, 100% Cotton,  
Mercerized. White colour.





**Smeraldo Sateen**, Plain Design, 100% Cotton, Mercerized. White colour.  
**Sabrina Sateen**, Check Design, 100% Cotton, Mercerized. White colour.  
**Partout Decorative Cushion**, 100% Polyester, White/Grey Cliff colour.  
**Benaco Placemats and Napkin**, Linen/Cotton, Plain Weave, Hemstitch. White colour.  
**Checkerboard Towel Set and Bath Mat**, 100% Cotton, Double Twisted Terry, Check Border Design. White colour.  
**Velour Slippers**, 100% Polyester, Micro Suede Sole with Non-Slip Dots, Closed Toe. White colour.





**Ratière Sateen, Plain and Twill Large Vertical Stripe Design. 100% Cotton, Mercerized. White colour.**  
**Lucia Throw, Wool and cashmere throw with fringes on short sides. Grey Cliff colour.**





**Mille Sateen, Plain Design, 100% Cotton, Mercerized. White colour.**

**from left to right: Mille Sateen, Plain Design, 100% Cotton, Mercerized. White colour.**

**Michela Sateen, Plain Design, 100% Cotton, Mercerized. White colour.**

**Anna Sateen, Plain Design, 100% Cotton, Mercerized. White colour.**

**Smeraldo Sateen, Plain Design, 100% Cotton, Mercerized. White colour.**



**Silk Collection, Plain Design. White Colour.**

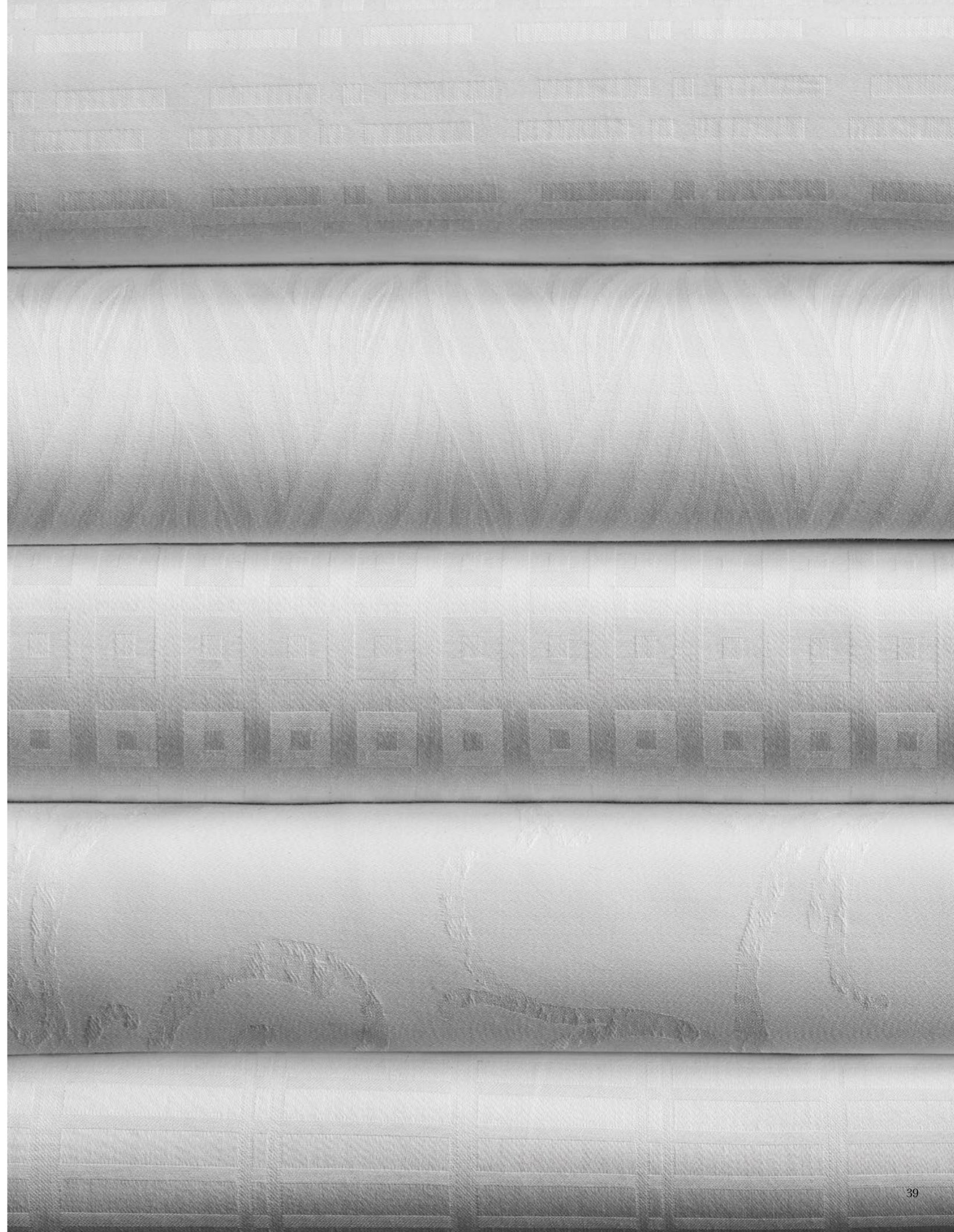
**Francesca Sateen, Large and Small Vertical Stripe Design, 100% Cotton, Mercerized. White colour.**

**Giada Sateen, Jacquard Wave Design, 100% Cotton, Mercerized. White colour.**

**Claudia Sateen, Large Box Design, 100% Cotton, Mercerized. White colour.**

**Elena, Fiandra Jacquard Design, 100% Cotton, Mercerized. White colour.**

**Agata Sateen, Stripe Design, 100% Cotton, Mercerized. White colour.**





**Agata Jacquard Velour Bathrobe**, 100% Cotton. White colour.  
**Agata Towel Set and Bath Mat**, 100% Cotton, Double Twisted Terry,  
 Jacquard Design on border. White colour.

- Waffle Hooded Bathrobe**, 100% Cotton, Waffle on the outside. Velour contrast at hood, pocket and sleeve borders.
- Houndstooth Shawl Collar Bathrobe**, 100% Cotton Flannel on the outside,  
 100% Cotton Velour on the inside. White piping, Grey colour.
- Pinstripe Shawl Collar Bathrobe**, 100% Cotton Flannel on the outside,  
 100% Cotton Velour on the inside. White piping, Grey colour.
- Waffle Slippers**, 100% Cotton, Micro Suede Sole with Non-Slip Dots, Closed Toe. White colour.





**Jersey Hooded Bathrobe**, Polyester on outside, Cotton on reverse. Grey colour.  
**Fluffy Hooded Bathrobe**, Polyester Microfiber Terry. White colour.

**Pique Kimono Bathrobe**, 100% Cotton, Pique. White colour.

**Lanes Towel Set and Bath Mat**, 100% Cotton, Double Twisted Terry, Dobby Border, Lanes Design at both ends. White colour.  
**Suite Jacquard Stripe Bathrobe**, 100% Cotton. White colour.





**Mediterraneo Beach and Pool Towel**, 100% Cotton, Single Twisted Terry, Vat colour, Applied White Single Twisted Terry Border, Mitred Corners. Taupe/White and Navy/White colours.







Striped Pool Towel, 100% Cotton, Pique Border, Double Twisted Terry.  
Beige Stripes and Blue Stripes colours.



**Benaco Tablecloth and Napkins.** Linen/Cotton, Plain Weave. Applied Border and Hemstitch.  
White and Grey colour.



**Valeria Napkin**, 100% Cotton, Full Tone Warp, Grey/Ivory Vat colour. Inwoven Frette logo.

**Granité Bordo Cornice Table Linen**, 100% Cotton, Damask, Double Twisted, Mercerized. White and Half-Tone Ivory Vat colours.

**Granité Bordo Cornice Napkin**, 100% Cotton, Damask, Double Twisted, Mercerized. Half-Tone Grey Vat colour.

**Satin Band Bordo Cornice Napkin**, 100% Cotton, Damask, Double Twisted, Mercerized. Inwoven Frette logo.

**Satin Band Bordo Cornice Table Linen**, 100% Cotton, Damask, Double Twisted, Mercerized. White and Half-Tone Ivory Vat colours.





Benaco Cocktail Napkin, Linen/Cotton, Plain Weave, Hemstitch. White colour.

**locations**

The St. Regis Rome  
Galleria Vik Milano  
Ceresio 7

**North America**  
850 Third Avenue, 10th Floor  
New York, NY 10022  
+1 212 299 0400  
[fnahospitality@frette.com](mailto:fnahospitality@frette.com)

**Europe, Middle East & Africa**  
Via Borgazzi, 23  
20900 Monza, Italy  
+39 039 6046 1  
[hospitality\\_emea@frette.com](mailto:hospitality_emea@frette.com)

**Asia Pacific**  
12/F One Capital Place  
18 Luard Road, Hong Kong  
+852 2260 8733  
[info@frettepacific.com](mailto:info@frettepacific.com)

[frette.com](http://frette.com)